

# How to connect to your Digital Recorder over the Internet / Network

**Includes details of full remote control via PC**

*Note: greyed out notes are for advanced users*

## **STEP 1: Connect to DVR using Browser**

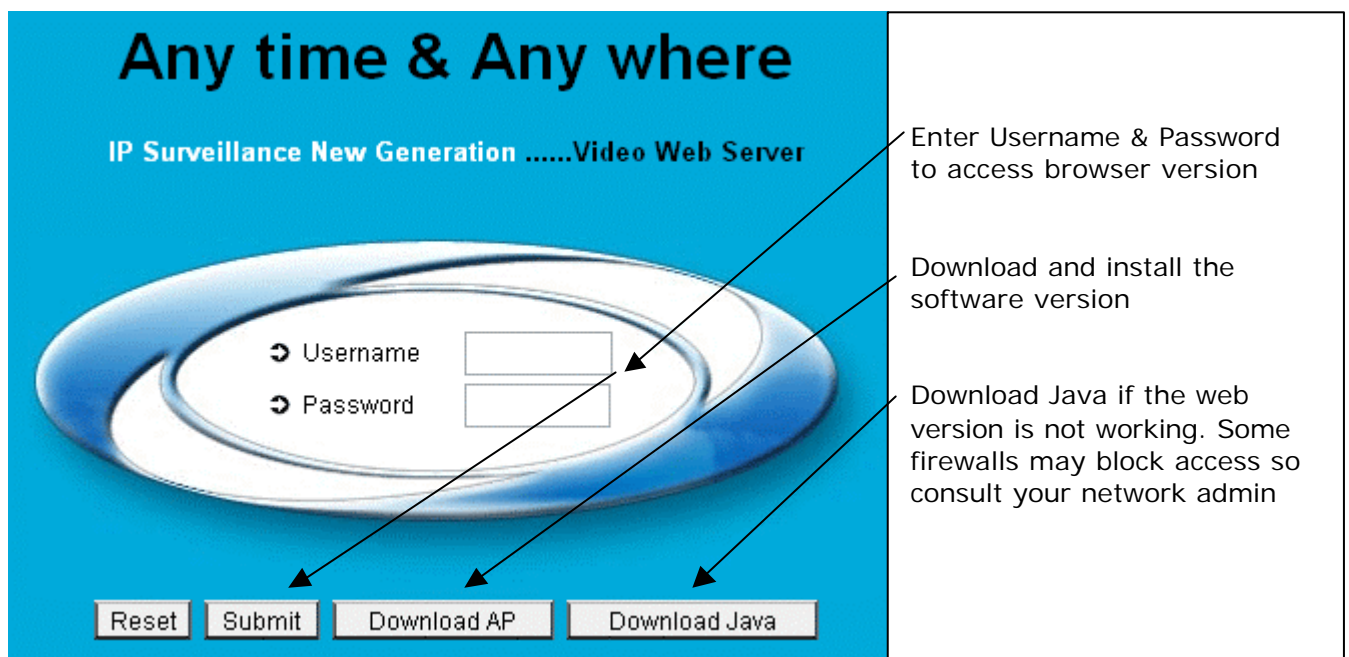
Open your Internet browser, we recommend Internet Explorer 6.1+. Enter the IP address or Internet Name that has been assigned to you in the address bar; e.g.

IP Address example – <http://82.44.176.76> (*static external or internal LAN IP*)

Internet Address - <http://yourname.dvrDNS.org> (*static name for dynamic IP addresses*)

(add port number after address if not using port 80 e.g org: 7070)

You will see the following page:



The screenshot shows a web interface with a blue header and a white login form. The header text reads "Any time & Any where" and "IP Surveillance New Generation .....Video Web Server". The login form has two input fields labeled "Username" and "Password". Below the form are four buttons: "Reset", "Submit", "Download AP", and "Download Java". Three arrows point from the right side of the image to the "Submit" button, the "Download Java" button, and the "Download AP" button. A fourth arrow points from the right side to the "Username" and "Password" input fields.

Enter Username & Password to access browser version

Download and install the software version

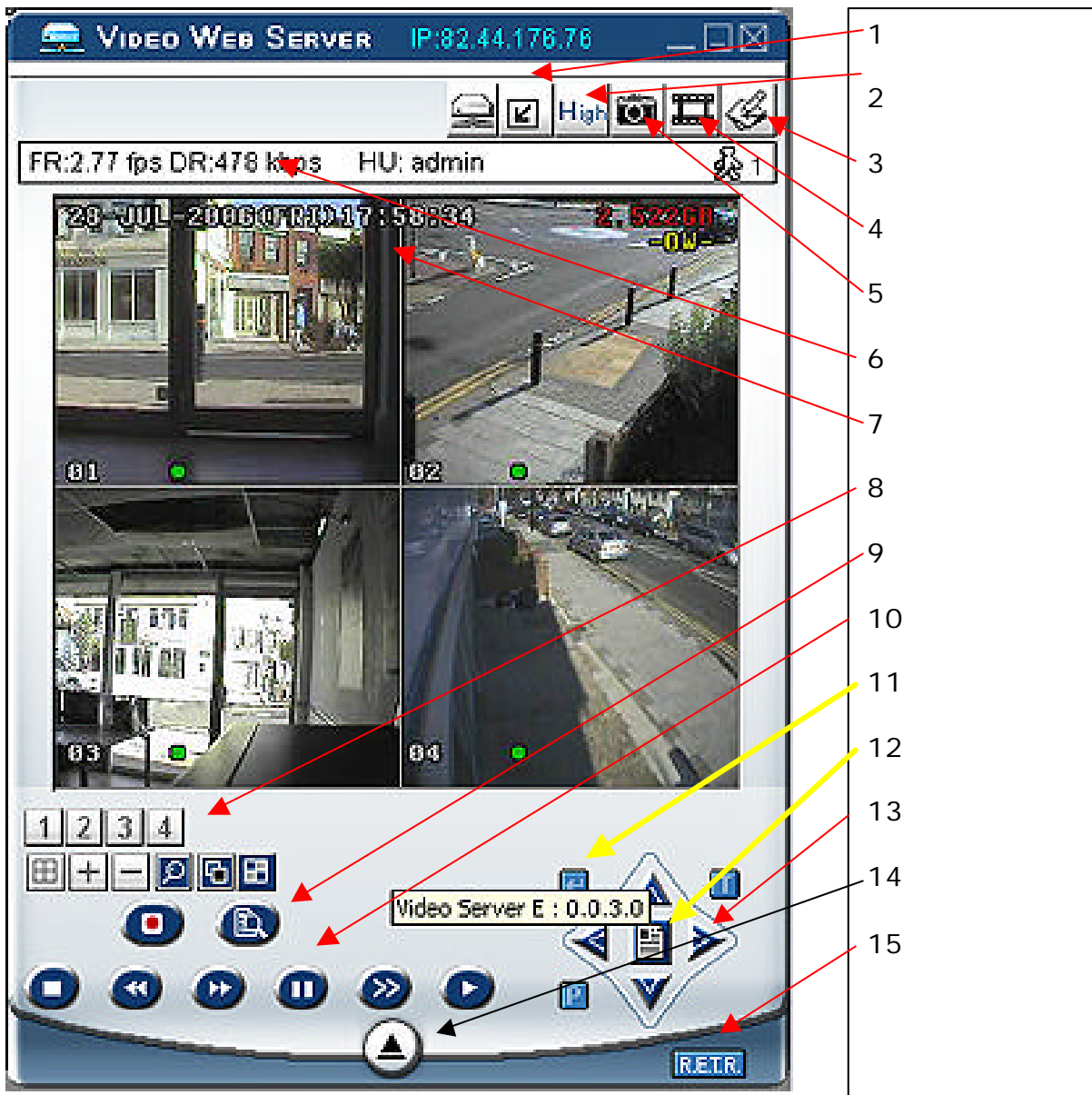
Download Java if the web version is not working. Some firewalls may block access so consult your network admin

The 'any time & anywhere' (web browser version) home page means you can connect to the DVR from virtually any standard PC connected to the Internet in the World. Java is also required to use this version so a download button is on this page.

## **Step 2: Using software**

The web version and software version differ in appearance but have many of the same features. For this illustration, we will explore features on Software version.

## Software Version



The DVR can also be completely configured from here, which we recommend that only advanced users should use. Use the guide below to navigate the software CCTV viewer;

1. Changes Resolution of images (makes images appear larger)
2. Changes image resolution between low, mid, high
3. System config, e.g. email notification, IP, network backup

4. Records live video to your PC
5. Takes a snapshot of live image and saves on your desktop
6. Download speed and frames p/sec information
7. Displays live time & date & remaining disk space on opposite side
8. Select which camera you want to see (displays full camera at full screen or choose split screen. Also set to sequence or zoom picture. + or – buttons can be used to manually switch from camera to camera and also used to change values / settings in menu system
9. Search & Record buttons
10. Playback controls such as stop / play / ffw / rrw / pause
11. Enter button. Important when browsing menu
12. Menu button
13. PTZ controls, up, down, left, right, zoom, turbo etc..
14. Button to display / hide DVR controls
15. Remote alarm, if activated, when alarm occurs, alarm will sound on remote PC and automatically record to offsite or alternative PC.

### **How to Playback Video:**

Click search button (point 9)

Use navigation keys to scroll to selection

Click enter to select

Use + - keys to adjust time & date, use navigation keys to move across & down

## How to Download Video:

Select config button (point 3)

Select DVR, then Network backup

Enter a time & date

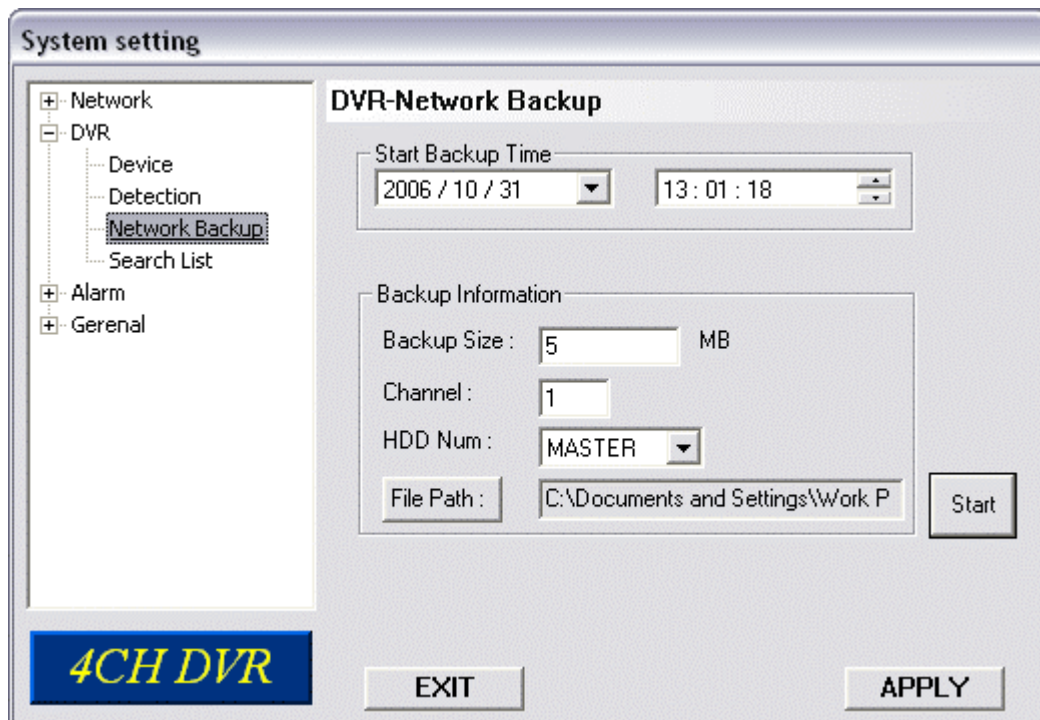
Enter Backup size, 1Mb is typically 1minute 30seconds

Enter Camera number to save video from

Enter Hard Drive #, typically Master

Enter File Path (where you want video to be saved, click file path button to choose)

Click Start!



Once the download has finished, click on the file saved. It was ask you to convert, click OK! The file will then play.

To make file readable on any PC, click the AVI button on the playback control. It will make a copy of the file and save it as a .AVI file.

The video will begin to load. Time it takes is dependant on amount of video to be downloaded and network speed. You can start to view the video while it downloads although we recommend to wait for download to complete.

### **Important to Network Administrators or DIY set up.**

- a) Router is required if DVR is not directly connect to modem
- b) Use menu on DVR to assign internal IP and gateway and port number
- c) If possible, use port 80, other ports can be used but please make note
- d) If port 80 not used, add port to end of IP or Internet Name, e.g. :8080
- e) Set router to forward chosen port to internal IP address of DVR
- f) Example, virtual server/service, route port 80 to 192.168.1.10
- g) Internet Name assigns static name if you have a dynamic IP address
- h) Internet Name is free, set up a Dynamic DNS Host on [www.dyndns.org](http://www.dyndns.org)
- i) Dynamic DNS Host details can be entered in DVR via web config panel

Current Known Issues: Some Netgear routers do not route video.